

Information about pigs



Large white

- British breed
- Very prolific breed – sows (females) produce large litters i.e. large no. of piglets
- Fast growth rates- put on weight v. quickly
- Good food conversion ratios (F.C.R.'s)
- Good meat quality

Note : F.C.R. is the amount of meal eaten to put on 1Kg. of liveweight gain (LWG)

e.g. if a pig A eats 3kg. of meal to put on 1 Kg. LWG and pig B eats 2Kgs. meals to put on 1Kg. LWG, then pig B has a much better FCR than pig B

i.e. pig B needs less meals to put on 1Kg LWG. The lower the FCR the better.!



provided by National Swine Registry

Landrace

- Danish breed
- Long bodied
- Good conformation
- Large hams (the ham is the “fat part” at the top of each leg)

Note

1. You will be able to identify the large white because of it's erect ears (ears “standing up”). The landrace has “droopy” ears (ears “lying down”).
2. Both these breeds are kept intensively indoors in Ireland.

Pig farmers carry out a lot of crossbreeding to get the best of the characteristics of both breeds above e.g.



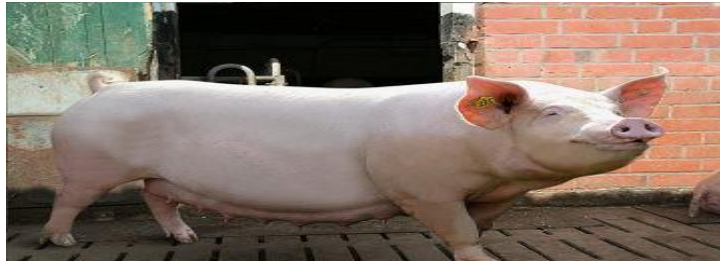
Large white (LW) boar

X



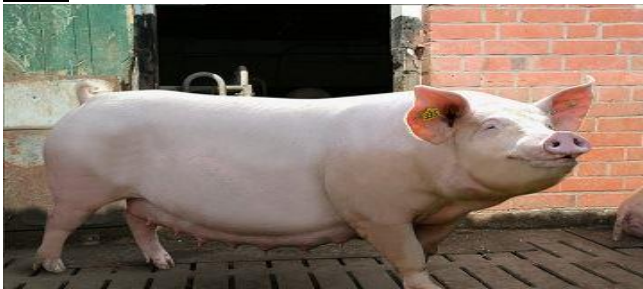
provided by National Swine Registry

Landrace (LR) sow



F1 (first generation) hybrid sow (contain best characteristics of both LW and LR)

Then



F1 hybrid sows (LW x LR)

X



Landrace (LR) boar



F2 (2nd generation) sows (LW xLR) X LR

The F2 sows would then be crossed with a Large white boar and so on :



F2 sows (LW xLR) X LR

X



Large white boar

This system of cross – breeding is called “criss – cross” breeding



Saddleback

- **Good mothering ability**
- **Large litter size**
- **Hardy breed**
- **Used for outdoor and organic pig production**

Note

1. You will recognise this breed easily because of its black colour with a white band around its shoulder (like a saddle)